

Thermalwatch

Capstone Presentation



Team Satellite Fire Patrol



Zachary Hallemeyer

Architect



Aaron Santiago

Team Leader



Ricardo Chairez

Release Manager

Our Clients



Dr. Camille Gaillard

Post-Doctoral Researcher



Dr. Christopher Doughty

SICCS Assistant Professor



Benjamin Wiebe

PhD Student

Problem Statement

- Climate change's effects are felt throughout the world
 - Wildfires
 - Coral Bleaching
 - Tropical Forest Canopies

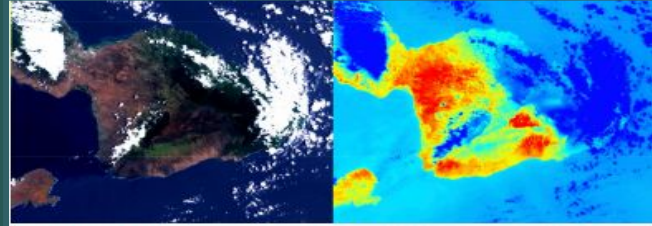
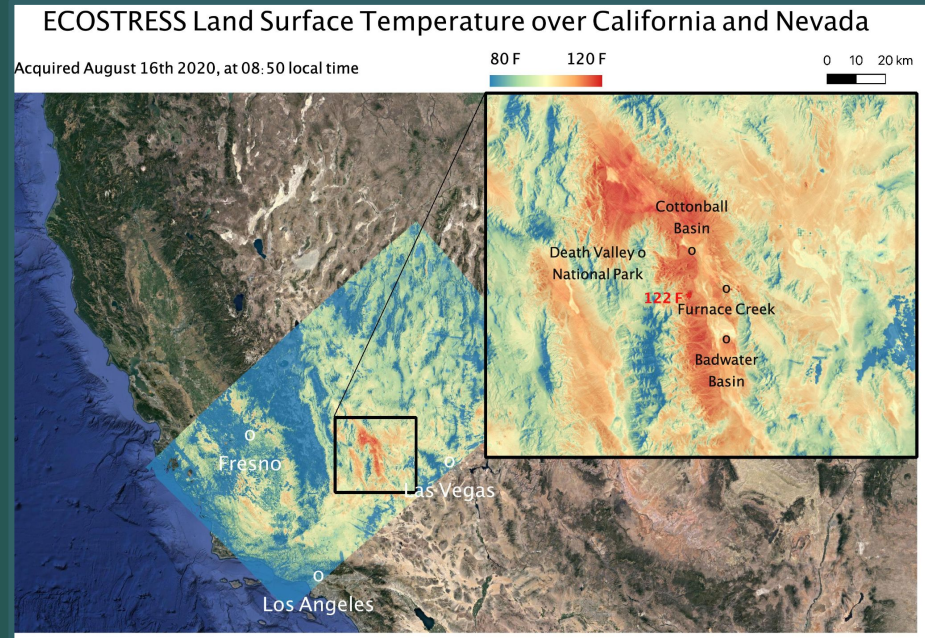


Figure 2: Landsat 8 satellite images of Maui, Hawaii from August 7, 2023, the day before devastating wildfires broke out across the island. *Left:* RGB image. *Right:* Corresponding thermal infrared image shows hot conditions in the grasslands on the western side of the island, where fires broke out the following day.



Problem Statement

- Satellites
 - Ecostress
 - Sentinel-3 SLSTR
 - ASTER
 - MODIS
- Lack of easy access to temperature data



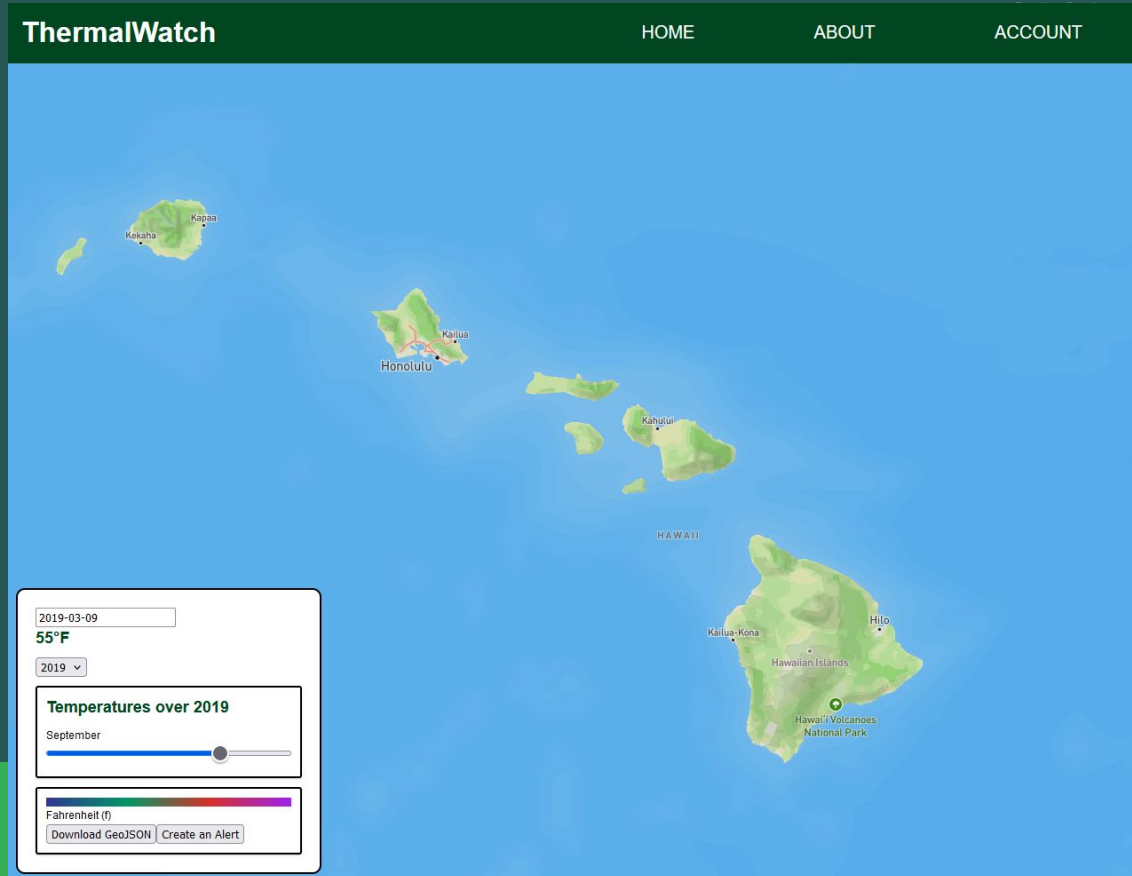
Solution Overview

NAU's Monsoon and Data Portal

- Nasa Ecostress
- Alert System

Technologies

- Nasa Ecostress
- NAU Monsoon
- Vue and Mapbox



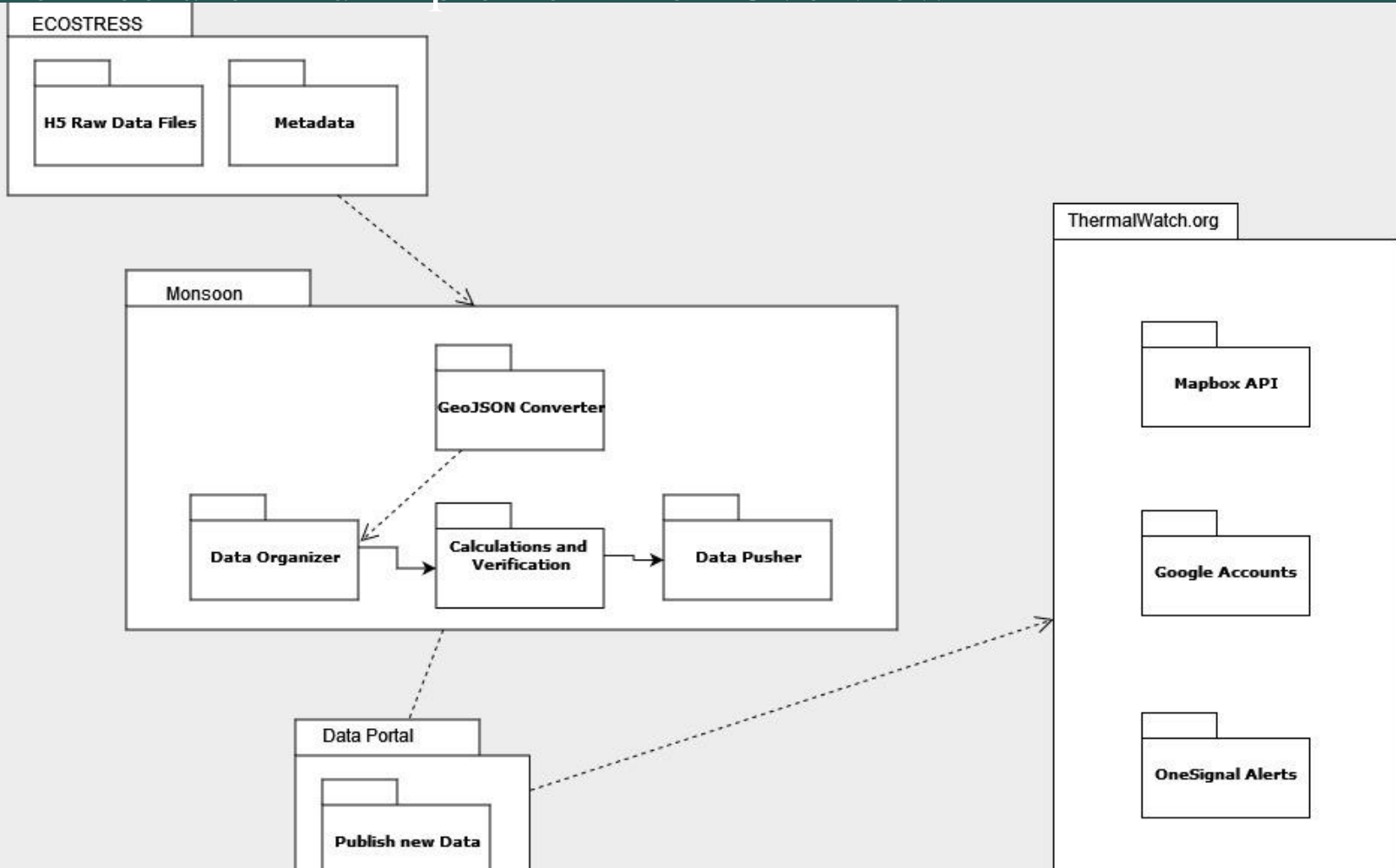
Demo Review



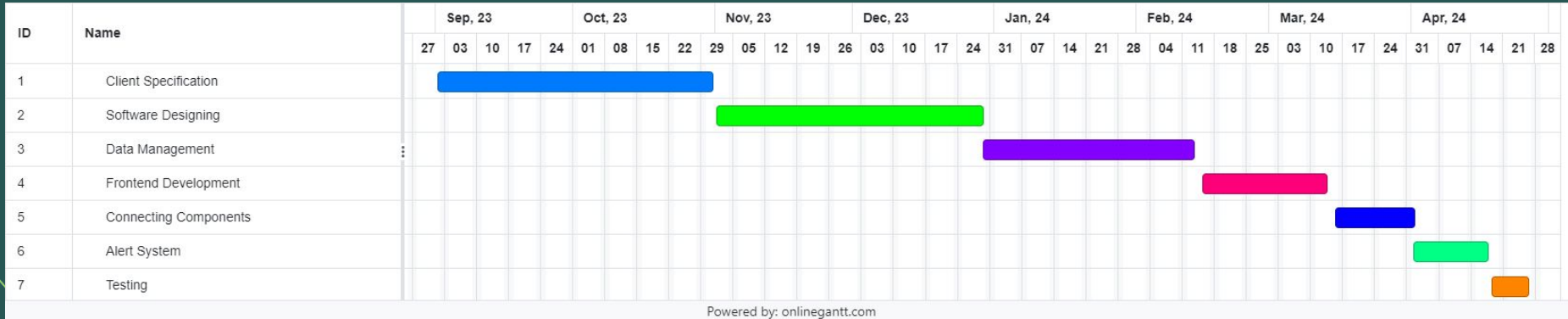
Requirements

- Overlay and store most recent temperature data on Hawaii
- Overlay and store historical temperature data on Hawaii
- Allow users to set custom areas to monitor with custom thresholds
- Allow users to download temperature data files

Architecture And Implementation Overview



Schedule



Challenges and Resolutions

Challenges

- Mapbox Storage Limitations
- Monsoon Not allowing Communication
- Cloud Masking
- Averages of Data
- General Quality Control

Resolutions

- Land Masking
- Publishing data and creating a backend on AWS
- NASA Ecstress Quality Control

Testing

Unit

- Monsoon Scripts
 - PyTest
- AWS Scraper
 - JEST

Integration

AWS Backend

- Retrieves Data Correctly
- Error Avoidance
- Vue is building correctly

Monsoon

- Proper Publishing and calculations

Usability

Website

- Feedback from clients
- Random User testing

Future Work

- Make the system worldwide
- Data Validation & Control
- Expand historical data beyond 2019



Conclusion

Summary

- Increased temperatures worldwide
- Easier access to data for research

Outcomes

- Improved the speed and access to NASA's
Ecostress

Value

- Easier access to thermal data for researchers

Thank you to our clients and others!

Scan This to Access Thermalwatch



The background is a dark teal color. In the top-left corner, there is a solid green circle. In the top-right corner, there is a vertical grid of small, semi-transparent green dots. At the bottom, there is a horizontal band of a lighter green color. Within this band, there are several decorative elements: a thin white outline of a circle on the left, a solid dark green circle in the center, and another thin white outline of a circle on the right. A solid green circle is also partially visible on the right edge of the frame.

Thank You

Questions?